



In the fall of 2006, the Office of Student Activities (OSA) initiated a Comprehensive Office Assessment and Review (COAR). This review involved the selection of six student leaders (two from SGA, one from SAC, one from IFC, one from PHA, and one from NPHC) who were charged with reviewing the self-report, meeting/questioning the OSA staff, and making final recommendations for a three year office strategic plan with a target completion date of May 2010.

One of the many recommendations within the report was: "The Office of Student Activities should explore options for a new office name. The current name does not reflect many of the positive aspects coming out of the office.... As a committee we believe the word engagement should be included within the office name. The office needs to continue to focus on getting students engaged within the campus community – this falls in line with the public affairs mission of the university." COAR Review

## Office of Student Engagement

Recommendations 2007. The Office of Student Activities staff reviewed this recommendation, and after researching current trends in the field, recommended that the Office of Student Activities be renamed the Office of Student Engagement which was approved and made effective June 26, 2009 with the following mission statement:



Office of Student Engagement

**Office of Student Engagement Mission Statement**  
The Office of Student Engagement is dedicated to providing an environment where all students are empowered to be actively involved both inside and outside of the classroom. We believe by enhancing the resources and development for students, student organizations, and advisors, we will provide opportunities to create memorable experiences that will complement the academic and public affairs mission of the university. We will provide programs that promote co-curricular involvement through the development of leaders, cultural understanding, intellectual growth, philanthropic spirit, social engagement, service to others, and the promotion of lifelong learning.

## Upcoming Campus Events

### Sept. 11-17, Public Affairs Week

Sept. 16 & 20, SAC showing of *Away We Go*, PSU theater, Free Admission

Sept. 17, Plaster Student Union 10th Anniversary Celebration

Sept. 19, Beartones Concert on the North Mall, Free Admission

Sept. 21, SAC presents "Open Mic Night"

Sept. 23 & 27, SAC showing of *Drag Me to Hell*, PSU theater, Free Admission

### Sept. 25 & 26, Family Weekend

Sept. 30 & Oct. 4, SAC showing of *The Hangover*, PSU theater, Free Admission

## It's Time to Update Your Organization!

Each year, EVERY student organization needs to attend an orientation and update their online information. These MUST be finished by September 30th, or your organization will be considered "inactive" and lose university recognition.

**Orientation:** At least one member needs to attend an orientation during September (unless your organi-

zation attended in April). If you are not sure whether someone has already attended, email [brandt217@live.missouristate.edu](mailto:brandt217@live.missouristate.edu).

To register for an orientation session, follow this link: <http://www.missouristate.edu/studentengagement/71154.htm>

**Online Updates:** Every group needs to check that their information online is up to date and veri-

fied. To access the online system, follow this link and click the Organization Renewal icon: <http://organizations.missouristate.edu/guide/default.htm>. The officers and advisor you have listed in this system need to verify their information; otherwise, your group will be considered "inactive". To check who has verified, click the View Verifications link on your organization's page.

### NOTE:

**If your organization is interested in utilizing a mailbox in PSU 111, please stop by the Office of Student Engagement, PSU 101 to sign-up with Cyndi Warnow.**

**Limited space available, get your application in today!**

## Family Weekend

September 24-25, Family Weekend will begin here at Missouri State University! Please invite family members to join us for a weekend of exciting activities and experience both our wonderful campus and the Springfield community.

For information on Family Weekend 2009, please click the following [link](#).

There may be more events or information added in the coming weeks, so be sure to check back for to the website for updates. If you have questions, please contact

[FamilyAssociation@MissouriState.edu](mailto:FamilyAssociation@MissouriState.edu) or (417) 836-7641.



## Keep YOUR members safe—H1N1

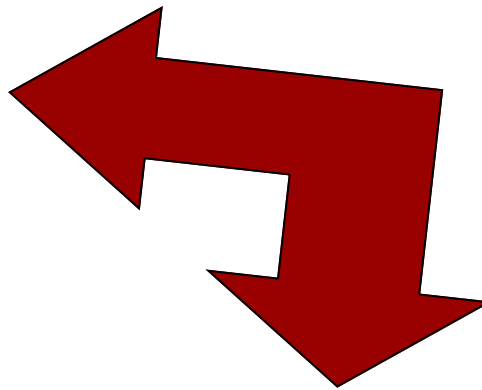
H1N1 is a new type of Influenza A strain that is a genetic combination of swine, avian, and human influenza viruses. H1N1 Flu is spread like Seasonal Flu; when a person coughs or sneezes, they send contaminated respiratory droplets into the air where another person may inhale them. Sometimes people may become infected by touching a contaminated surface or object and then touching their own eyes, nose or mouth. The symptoms of H1N1 Flu are similar to the symptoms of Seasonal Flu, and may include fever, cough, sore throat, body aches, headache, chills, runny or stuffy

nose, tiredness, nausea, vomiting and diarrhea. Like Seasonal Flu, H1N1 Flu may cause underlying chronic medical conditions to worsen, require hospitalization, and infrequently death. A person who has H1N1 Flu may be able to infect others one day before their symptoms develop and up to seven days after showing symptoms. Protect yourself by frequent hand washing or using alcohol based cleansers. If you do become ill with flu like symptoms, please contact Taylor Health and Wellness Center at 836.4000. H1N1 can be treated with prescribed antiviral medication

(Tamiflu), and is available at Taylor Health and Wellness Center; however it may not be necessary for most people to recover from the flu. Keep your members safe by offering hand sanitizer and excusing them from meetings and events if they are feeling ill.

If you have questions, please contact

Taylor Health & Wellness Center  
Missouri State University  
901 S. National Avenue  
Springfield, MO 65897  
(417) 836-4000



**Don't forget to tell your organization about a new MSU tradition**

## Help show your Bear Pride—Tailgating

Football season is right around the corner! Every fall, alumni, students, and the surrounding community come together at “BearFest” to show their support and pride for the Bears football team! Your organization is invited to consider hosting a special event for your students and alumni! If you plan to host an event at BearFest Village, you must reserve a space in advance by contacting Lance Kettering

LanceKettering@missouristate.edu

or calling 417-836-4143



### Upcoming Football Games

9/19/09

**Bears vs. Murray State**

**Kickoff @ 3:00pm**

**For a full schedule, see**

**[www.missouristatebears.com](http://www.missouristatebears.com)**

# Public Affairs Week

## “Evolving Economic Realities

Friday, Sept. 11

Banner-Revealing Contest, PSU Theater @ 7:00 pm

Monday, September 14

CBCO Blood Drive, PSU Ballroom, all day

Bear Build Kick-Off, North Mall @ 2:00 pm

Bear Essentials Financial Planning Seminar, Library Auditorium @ 6 pm

Habitat for Humanity International Speaker, PSU 314AB @ 7 pm

Tuesday, September 15

CBCO Blood Drive, PSU Ballroom, all day

Market Blast!, PSU Ballroom & Theater @ 10-4 pm

Local Business Fair, PSU 2nd Floor @ 10:30 - 2pm

Federal Reserve Speaker, Library Auditorium @ 2 - 7pm

Wednesday, September 16

Volunteer Fair, PSU 2nd floor @ 10:30 - 2pm

MSU Feast or Famine, PSU Ballroom @ 7pm

Food Drive @ Weekly SAC Film, PSU theater @ 9:00 pm

Thursday, September 17

Voter Registration, MSU Campus @ 10:00 - 4:00 pm

Citizenship Fair, PSU 2nd floor @ 10:30—2pm

Preamble Reading by Dr. Nietzel, In front of Carrington @ 11:00 am

U2 Move, PSU theater @ 7:30 pm

After Hours Trivia Night, PSU Food Court @ 9:00 pm

Monday, September 21

Visit Shengana, Africa, PSU Ballroom @ 10:00 am & 6:15 pm

Evolving Economic Realities: A View from Ghana, Africa, PSU Ballroom @ 7pm

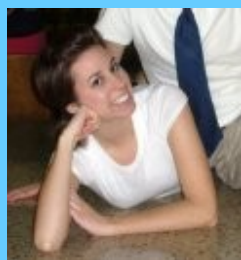
In light of recent global and domestic economic developments, it seems appropriate that the University community should spend time considering the nature of these changes as well as their numerous impacts. The theme this year is “Evolving Economic Realities”. Public Affairs Week will work within the three essential components of the Missouri State University Public Affairs mission (Ethical Leadership, Cultural Competency and Community Engagement) to meet the goals of this year’s theme. If you are interested in learning more about a specific event, or buy a PAWtee shirt, please visit [www.missouristate.edu/paw](http://www.missouristate.edu/paw).

For more information, please contact  
**Robert Trisler**  
at [Trisler999@live.MissouriState.edu](mailto:Trisler999@live.MissouriState.edu)  
or (417) 836 - 4386.



For more information on how your organization could be featured in “The Club”, please contact the following

## Meet the Student Organization Staff



**Maggie Brandt,**  
**Co-curricular Involvement GA**  
**[brandt27@live.missouristate.edu](mailto:brandt27@live.missouristate.edu)**  
**(417) 836 - 4286**



**Lindsay Farris**  
**Student Organization Specialist**  
**[lil765@live.missouristate.edu](mailto:lil765@live.missouristate.edu)**

# THE ULTIMATE ADVENTURE

missouri state homecoming 2009

**IS YOUR ORGANIZATIONS *ADVENTURE***

**READY TO **BEGIN?****

**LET THE STORY BEGIN: OCTOBER 25 - 31**

## DEPARTURE DATES

*August 31*

Homecoming Packets [released online](#)

*September 23*

Royalty applications due

*October 9*

Final application deadline for all competitions



Homecoming Philanthropy event: CanStruction



Student work hard on their 08' Chalk-N-Rock

Look for next edition of "The Club" to arrive in your email inbox on October 1

If your organization would like to be featured, please send an email to Lindsay Farris [lil765@live.missouristate.edu](mailto:lil765@live.missouristate.edu). Submissions should include upcoming events that your organization is hosting, awards, highlights, etc. "The Club" is emailed to organization presidents and posted on the Student Organizations webpage, and will be issued on the first of each month. If you have any questions, please feel free to ask!